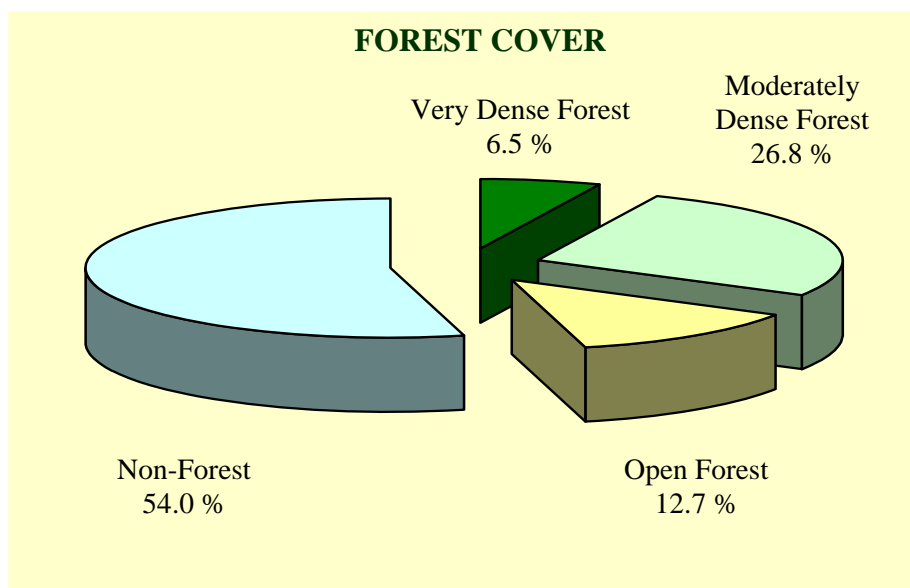


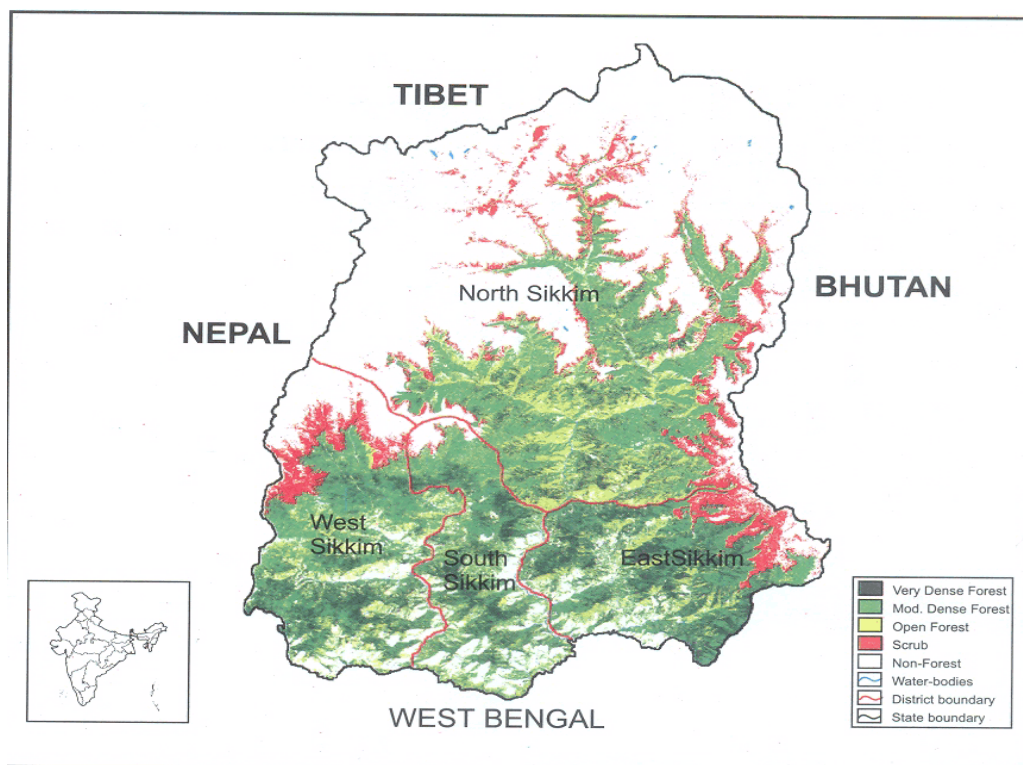
## STATE OF FOREST REPORT 2003 - SIKKIM FOREST

<b>Geographic Area</b>	7,096 km <sup>2</sup> (0.2 % of country)
<b>Population</b>	0.54 million (0.05 % of country)
Urban	0.06 Million (11.1 %)
Rural	0.48 Million (88.9 %)
<b>Average Population Density</b>	76 persons per km <sup>2</sup>
Tribal Population	22.40 %
Livestock Population	0.39 million (0.1 % of country)
<b>No. of Districts</b>	4
No. of Hill Districts	4
No. of Tribal Districts	4

FOREST COVER	
Very Dense Forest	458 km <sup>2</sup>
Moderately Dense Forest	1,904 km <sup>2</sup>
Open Forest	900 km <sup>2</sup>
<b>Total</b>	<b>3,262 km<sup>2</sup></b>
<i>Of State's Geographic Area</i>	<i>45.97 %</i>
<i>Of Country's Forest Cover</i>	<i>0.48 %</i>

TREE COVER	
Culturable Non-Forest Area (CNFA)	322 km <sup>2</sup>
No. of trees per ha of CNFA	20.3
<b>Tree Cover</b>	<b>22 km<sup>2</sup></b>
<i>Of State's Geographic Area</i>	<i>0.31 %</i>
<i>Of CNFA</i>	<i>6.83 %</i>





**Forest Cover Map of Sikkim**

### Districts-wise Forest Cover (Sikkim)

No. of Districts : 4

(Area in km<sup>2</sup>)

Districts	Geographic Area	Forest Cover				Percent	Change
		Very Dense	Moderately Dense	Open Forest	Total Forest		
East Sikkim <sup>TH</sup>	954	162	396	121	679	71.17	9
North Sikkim <sup>TH</sup>	4,226	92	747	487	1,326	31.38	25
South Sikkim <sup>TH</sup>	750	95	311	123	529	70.53	19
West Sikkim <sup>TH</sup>	1,166	109	450	169	728	62.44	16
<b>Total</b>	<b>7,096</b>	<b>458</b>	<b>1,904</b>	<b>900</b>	<b>3,262</b>	<b>45.97</b>	<b>69</b>

## Forest Cover Change Matrix (Sikkim)

(Area in km<sup>2</sup>)

2001 Assessment	2003 Assessment				TOTAL 2001
	Dense Forest	Open Forest	Scrub	Non-Forest	
Dense Forest	1,859	437	8	87	2,391
Open Forest	289	413	36	64	802
Scrub	27	4	236	74	341
Non-Forest	187	46	80	3,249	3,562
<b>Total 2003</b>	<b>2,362</b>	<b>900</b>	<b>360</b>	<b>3,474</b>	<b>7,096</b>
<b>Net change</b>	<b>-29*</b>	<b>98</b>	<b>19</b>	<b>-88</b>	

Source : State of Forest Report 2003, Forest Survey of India (Ministry of Environment and Forests), Dehradun